



**INTERLOGIX**<sup>®</sup>  
LOGISTICS HUBS & DISTRIBUTION CENTERS

# LOMAS

LOMAS II

Bondojito 340, Hidalgo, Álvaro Obregón, 01120, México City

# Interlogix Lomas II

We develop and operate **Vertical Logistics Parks** in strategically located areas within Mexico City and the country's main cities.

Interlogix Lomas II, a reflection of the success of our Park Lomas I, with an unparalleled location at the intersection of Av. Constituyentes and Av. Observatorio, providing multiple exits and access points to the main communication routes of Mexico City.

**building the future  
of warehouses, for middle  
& last mile distribution**



## Main Features



70,352 SF  
of leasable area  
(6,536 sqm)



14 ft clear height  
(4.35 m)



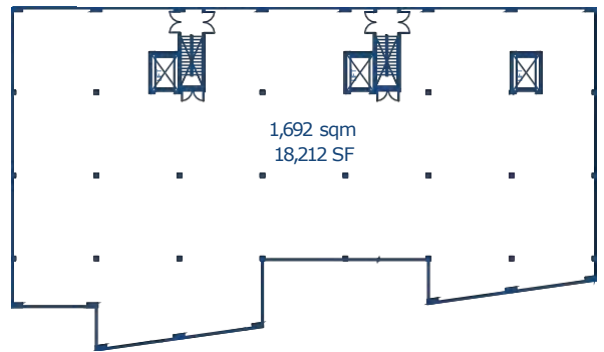
Spaces starting  
from 4,811 SF  
(447 sqm)



4 floors of  
leasable area



### Typical floor plan



3 high-speed cargo lifts capable of carrying up to two tons each



Renewable energy



Rainwater harvesting and reuse systems



Maneuvering yard with multiple dock positions for vehicles ranging from vans up to 53-foot trailers



Underground parking

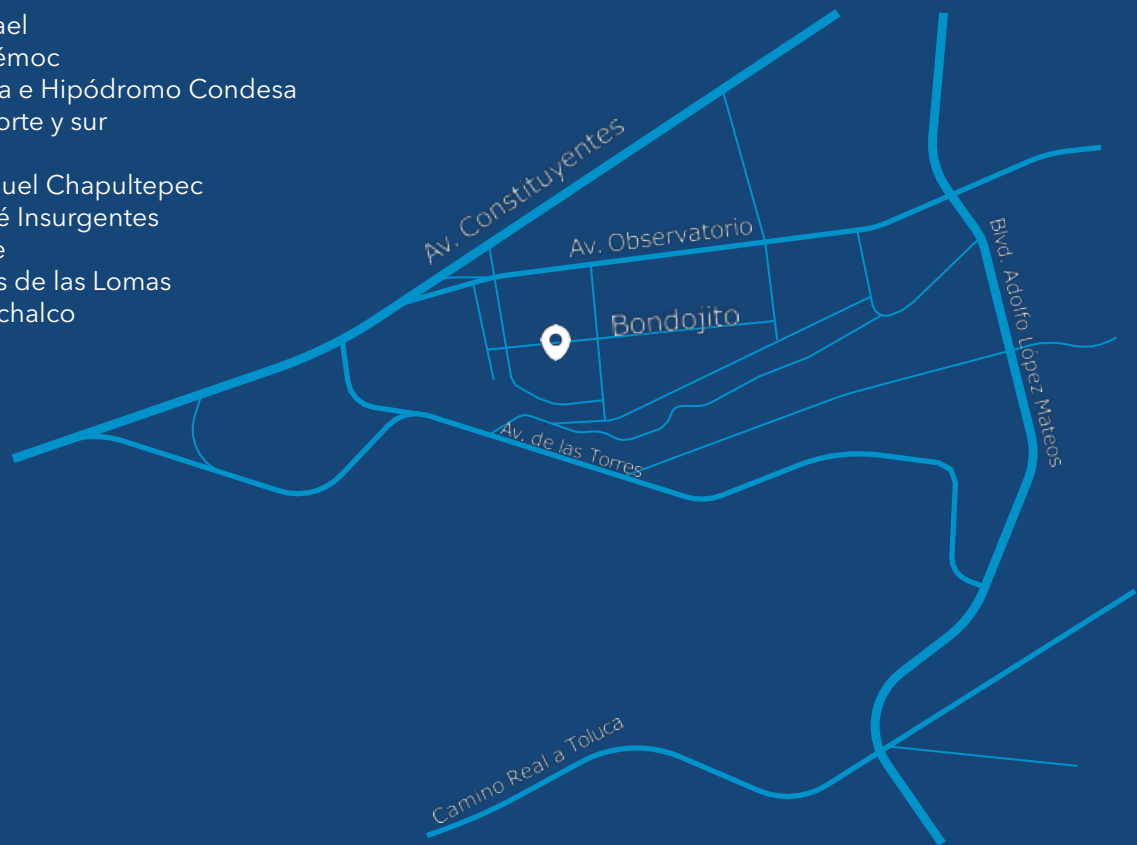
## Location

# Lomas II

México City

### Nearby Zones - 5km Radiu

- Polanco (Todas las secciones)
- Lomas de Chapultepec (Todas las secciones)
- Granada
- Anzures
- San Rafael
- Cuauhtémoc
- Condesa e Hipódromo Condesa
- Roma norte y sur
- Juárez
- San Miguel Chapultepec
- San José Insurgentes
- Santa Fe
- Bosques de las Lomas
- Tecamachalco



## Contact

### Interlogix

**Fernando Garzón**

[fernando@interlogix.com.mx](mailto:fernando@interlogix.com.mx)

Ph. +52 55 4162 1100

Av. Santa Fe 505 Piso 5

Cruz Manca, CDMX, 05349

México

[interlogix.com.mx](http://interlogix.com.mx)