

CENTENARIO



CENTENARIO

Av. Centenario 514, Merced Gómez, Álvaro Obregón, 01600, México City

Interlogix Centenario

We develop and operate **Vertical Logistics Parks** in strategically located areas within Mexico City and the country's main cities.

Interlogix Centenario is strategically located in the heart of Lomas de Tarango, on Av. Centenario, providing direct access to main roads in Mexico City. Furthermore, it stands out for featuring a spacious maneuvering yard of over +22,700 SF (+2,100 sqm), offering the versatility and capacity necessary for efficient last-mile logistics

**building the future
of warehouses, for middle
& last mile distribution**



Main Features



52,086 SF
of leasable area
(4,839 sqm)



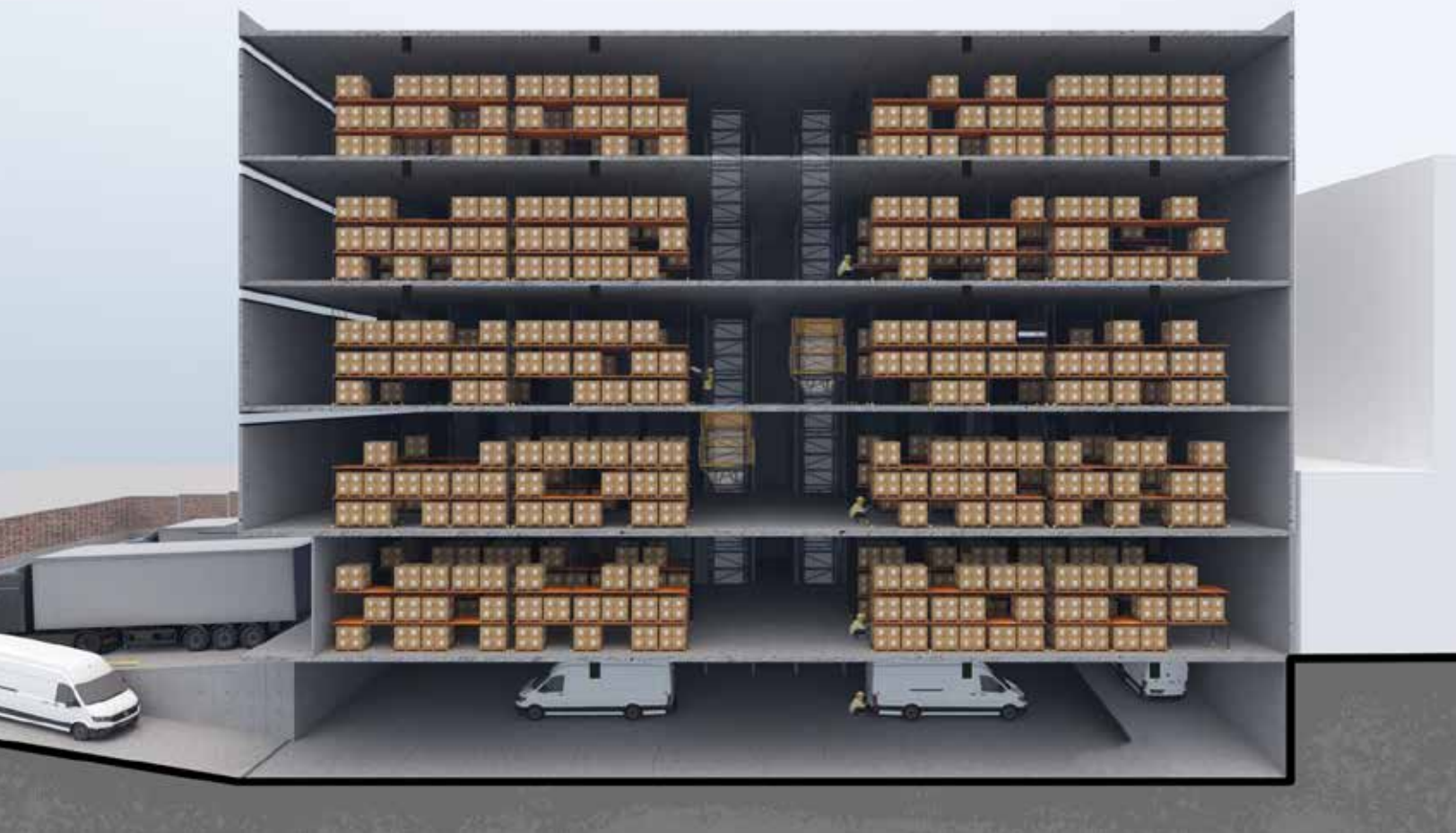
14 ft clear height
(4.35 m)



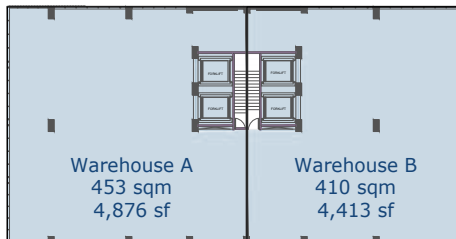
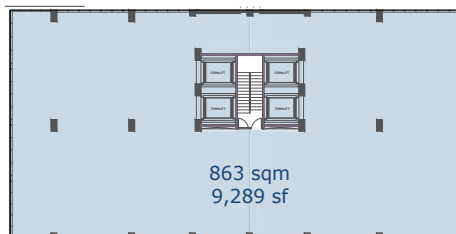
Spaces starting
from 4,413 SF
(410 sqm)



6 floors of
leasable area



Typical floor plan & divided floor



4 high-speed cargo lifts capable of carrying up to two tons each



Renewable energy



Rainwater harvesting and reuse systems



Maneuvering yard with multiple dock positions for vehicles ranging from vans up to 53-foot trailers



Parking

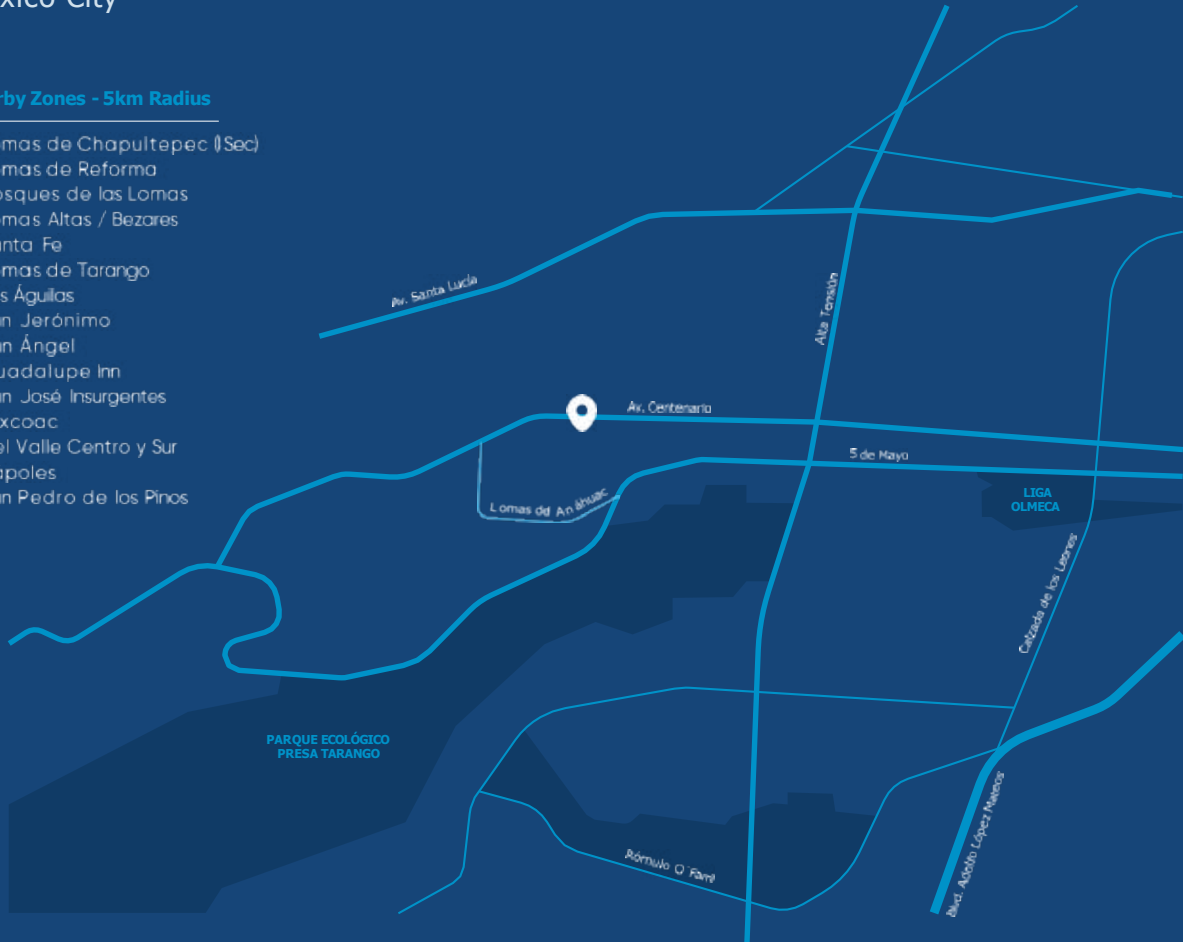
Location

Centenario

México City

Nearby Zones - 5km Radius

- Lomas de Chapultepec (I Sec)
- Lomas de Reforma
- Bosques de las Lomas
- Lomas Altas / Bezares
- Santa Fe
- Lomas de Tarango
- Las Águilas
- San Jerónimo
- San Ángel
- Guadalupe Inn
- San José Insurgentes
- Mixcoac
- Del Valle Centro y Sur
- Nápoles
- San Pedro de los Pinos



Contact

Interlogix

Fernando Garzón

fernando@interlogix.com.mx

Ph. +52 55 4162 1100

Av. Santa Fe 505 Piso 5

Cruz Manca, CDMX, 05349

México

interlogix.com.mx