



**CENTENARIO**

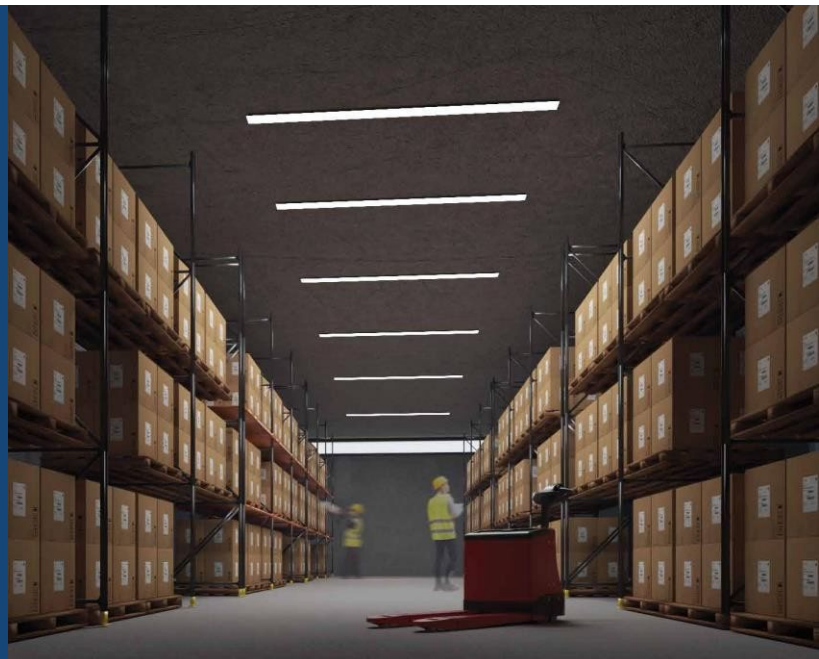
Av Centenario 514, Col. Lomas de Tarango, Álvaro Obregón, 01600, México City

# Interlogix Centenario

We develop and operate **Vertical Logistics Parks** in strategically located areas within Mexico City and the country's main cities.

Interlogix Centenario is strategically located in the heart of Lomas de Tarango, on Av. Centenario, providing direct access to main roads in Mexico City. Furthermore, it stands out for featuring a spacious maneuvering yard of over +22,700 SF (+2,100 sqm), offering the versatility and capacity necessary for efficient last-mile logistics

**building the future  
of warehouses, for middle  
& last mile distribution**



## Main Features



52,086 SF  
of leasable area  
(4,839 sqm)



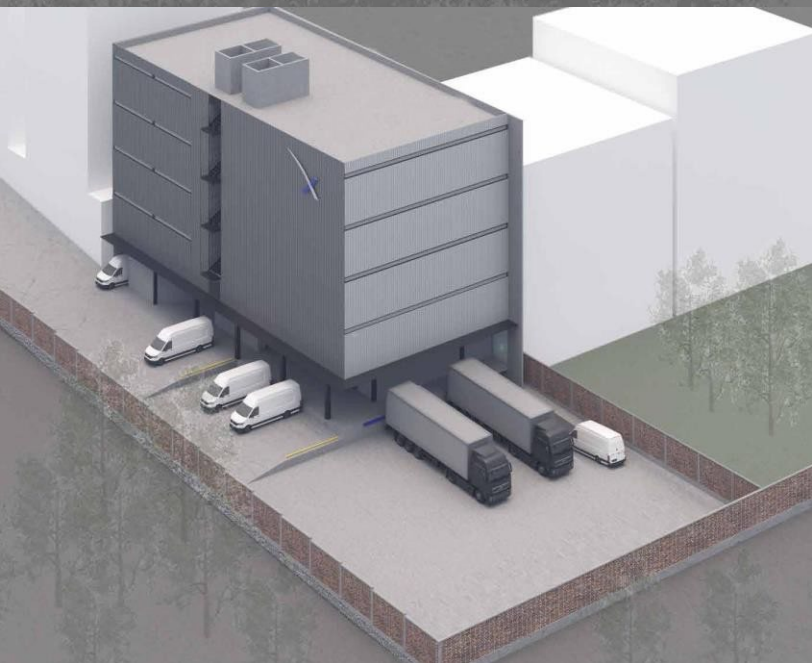
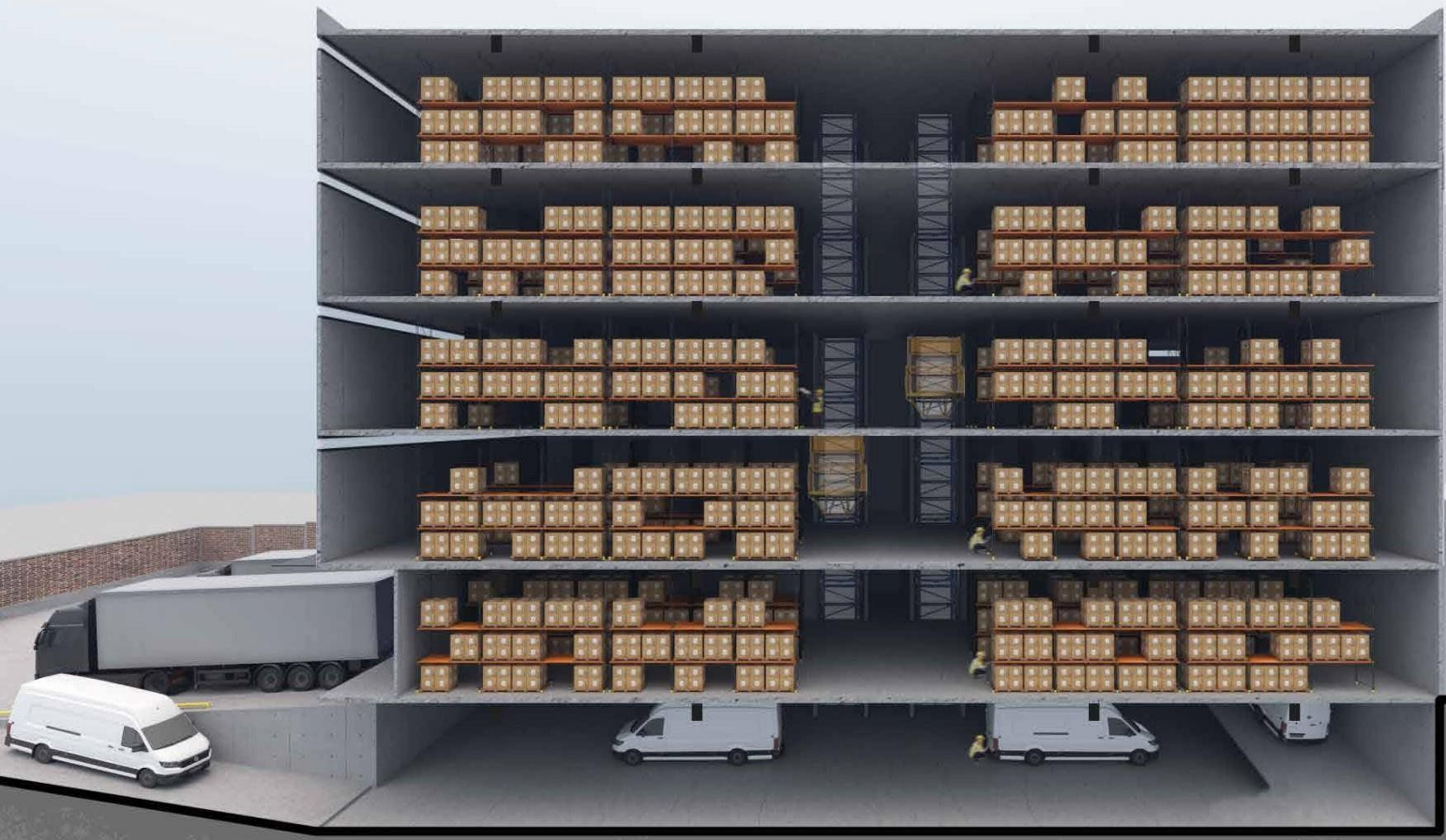
14 ft clear height  
(4.35 m)



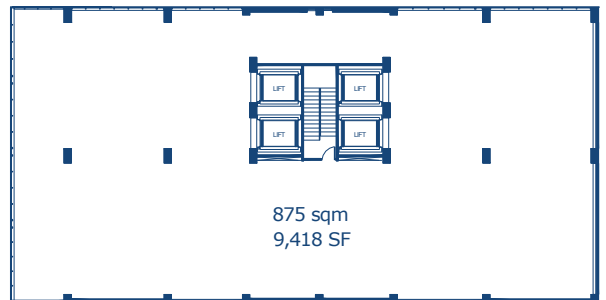
Spaces starting  
from 4,467 SF  
(415 sqm)



6 floors of  
leasable area



### Typical floor plan



4 high-speed cargo lifts capable of carrying up to two tons



Renewable energy



Rainwater harvesting and reuse systems



Maneuvering yard with multiple dock positions for vehicles ranging from vans up to 53-foot trailers



Underground parking

## Location

# Centenario

México City

### Nearby Zones - 5km Radius

- Lomas de Chapultepec (ISec)
- Lomas de Reforma
- Bosques de las Lomas
- Lomas Altas / Bezares
- Santa Fe
- Lomas de Tarango
- Las Águilas
- San Jerónimo
- San Ángel
- Guadalupe Inn
- San José Insurgentes
- Mixcoac
- Del Valle Centro y Sur
- Nápoles
- San Pedro de los Pinos



## Contact

### Interlogix

**Fernando Garzón**

[fernando@interlogix.com.mx](mailto:fernando@interlogix.com.mx)

Ph. +52 55 4162 1100

Av. Santa Fe 505 Piso 5

Cruz Manca, CDMX, 05349

México

[interlogix.com.mx](http://interlogix.com.mx)